



GENGXIN

PLASTIC&MOULDING

专注注塑模具领域



地址:浙江省余姚市泗门镇振兴南路300号

Add:No.300 Zhenxing South Road, Simen Town, Yuyao City, Zhejiang Province, China

邮编/PC.:315470

Tel:0086-574-62154698

Fax:0086-574-62156675

E-mail:gengxin@gengxinmould.com

zlf@gengxinmould.com



宁波更欣塑模有限公司

NINGBO GENGXIN PLASTIC & MOULDING CO., LTD.

依托CAD/CAE/CAM一体化技术构建全流程数字化研发体系，针对汽车轻量化内饰件、家电精密组件等复杂场景搭建专属仿真模型，可提前预判翘曲、缩痕等成型缺陷，从源头规避设计风险。

Relying on the integrated technology of CAD/CAE/CAM, a whole-process digital R&D system is built, and a special simulation model is built for complex scenes such as lightweight interior parts of automobiles and precision components of household appliances, which can predict the forming defects such as warpage and shrinkage marks in advance and avoid design risks from the source.

更欣塑模 精工细作

CONTENTS 目录

- > **01**
About us
企业简介
- > **03**
Speech by the chairman
董事长致辞
- > **04**
Brand interpretation
品牌诠释
- > **05**
Organizational structure
组织架构
- > **06**
Mold development diagram
模具流程图
- > **07**
Cooperative partner
合作伙伴
- > **09**
Professional equipment
专业设备
- > **11**
Professional R&D team
专业研发团队
- > **13**
Assembly shop
装配车间
- > **15**
Product display
产品展示

About Gengxin.

企业简介.

宁波更欣塑模有限公司始建于1992年，是一家专业从事家用电器及汽车内外饰件注塑模具的设计、制造和塑件成型加工的企业。公司占地17000余平方米，拥有四个现代化标准厂房。

公司位于高速发展中的长江三角洲，地理位置优越，交通便利，距国际大都市上海2小时车程，距宁波栎社机场40余分钟车程，距杭州萧山机场50余分钟车程，沪杭甬高速公路、高速铁路贯穿全境。

公司拥有资深工程师团队，运用先进的CAD/CAE/CAM技术进行模流分析与结构优化，从源头确保模具设计的可靠性与高效性。配备德国/日本进口五轴CNC加工中心、慢走丝线切割、镜面火花机等全系列高精度设备，确保模具零部件精度可达±0.001mm。贯彻ISO9001质量管理体系，从钢材选材到最终试模，全程多个质检节点，并依托三坐标测量仪等精密检测设备，为品质保驾护航。我们从概念到成品，全程赋能。依托领先的研发能力与全流程精密制造体系，将毫米的精度，提升至微米级的标准。因为我们深知，卓越的模具，是品质的生命线。

多年来，秉持着『以人为本，卓越品质，一流服务，共享成功』的经营理念，得到了广大客户的支持和信赖，国内客户主要有美的、海尔、飞利浦、霍尼韦尔、小天鹅、伊莱克斯、海信、澳柯玛、九阳、苏泊尔、新飞、松冈机电等，并出口到欧洲、北美、日本、韩国、中东等国家和地区，我们的技术广泛应用于汽车、医疗、家电、消费电子等多个领域，与全球领先品牌共同成长。

所有技术的极致，最终都源于人的极致。在宁波更欣塑模有限公司，匠心不是一句口号，而是刻在每一位员工心中的信条。是他们的专注、热忱与创新精神，让冰冷的钢铁拥有了灵魂。

我们致力于打造一个学习型、成长型的平台，因为我们认为，员工与企业共同进步才是创造永恒价值的核心。我们的愿景，是成为全球领先的精密制造标杆企业。这不仅要求我们在技术上持续突破，更要求我们肩负起推动行业进步、为客户创造超额价值的使命。我们期待，用我们的精密制造能力，让您的产品更具竞争力，让创新的想法更快地照亮现实。

每一次携手，都是迈向卓越的新起点。无论您的挑战多么复杂，构想多么前沿，宁波更欣塑模有限公司都愿成为您最坚实的后盾。让我们以精密为语言，以创新为引擎，共同塑造下一个行业标杆。精密智造，塑见未来。宁波更欣塑模有限公司，期待与您智造非凡！

宁波更欣塑模有限公司
期待与您智造非凡！

NINGBO GENGXIN PLASTIC & MOULDING CO., LTD.
looks forward to working with you to create extraordinary wisdom!



1992

始创于

在更欣塑模，匠心是刻进每道工序的行业标杆

In GengXin plastic mold, ingenuity is the industry benchmark carved into every process.

±0.001mm

零部件精度

确保每一套模具关键尺寸误差控制在微米级

Ensure that the key dimension error of each set of molds is controlled at micron level.



17000

平方米

四座现代化标准厂房

Four modern standard workshops.

Speech by the chairman 董事长致词

承蒙各界新老客户的支持和厚爱,宁波更欣塑模有限公司自创立以来始终立足于“以科技管理质量,以质量占领市场”的质量方针,“以人为本,和谐发展”的管理理念。致力于创建优秀的企业员工队伍,制造出优质的模具产品,提供卓越的售后服务。近几年,我们不断引进世界先进的制造设备,同时也引进了一大批优秀的人才。使模具的制造水平达到了国际领先水平,也得到了广大客户的信任和尊重。我们真诚希望本着“诚实做人、诚恳做事”的原则。充分利用自身优势和丰富的制造经验,为客户提供更高水平、更高品质的产品,更好地服务于客户。

周利峰 董事长

With the supports and deep love of the new and regular customers from all works of life, Ningbo Gengxin Plastic & Moulding Co., Ltd has always been based on the quality policy of "Technology managing quality, quality capturing market" and the management concept of "People-oriented, harmonious development" since its inception. It commits itself to establishing excellent enterprise staff, manufacturing high quality mold products and providing excellent after-sales service.

In recent years, we have been introducing not only advanced manufacturing equipments, but also a large number of talents. As a result, the manufacturing level has reached to the international advanced level, and we have also gained the majority of customers' trust and respect.

Our company sincerely hope that, with the principle of "To be honest men and to do things sincerely", we could fully exert our advantages and rich manufacturing experience to provide the customers with higher-level and higher-quality products and better service.

Lifeng Zhou Managing Director

Brand interpretation 品牌诠释

- 服务至上 Service As Top Priority
- 创新与进取 Innovation and Improvement
- 优质产品 High Quality Products
- 低成本/富有竞争力 Low Costs, High Competitiveness



公司使命 Corporate Mission

赢得全球化的拥戴与认可, 做同类产业中的佼佼者
Gaining Global Recognition, as the Leader in the Industry



经营理念 Operational Concept

以人为本、卓越品质、一流服务、共享成功
People Orientation, Excellence in Quality, First Class Service, Success Sharing



品质政策 Quality Policy

品质卓越、服务至上、提升效率、进取创新
Excellence in Quality, Service As Top Priority, Enhancement in Efficiency, Progress and Innovation

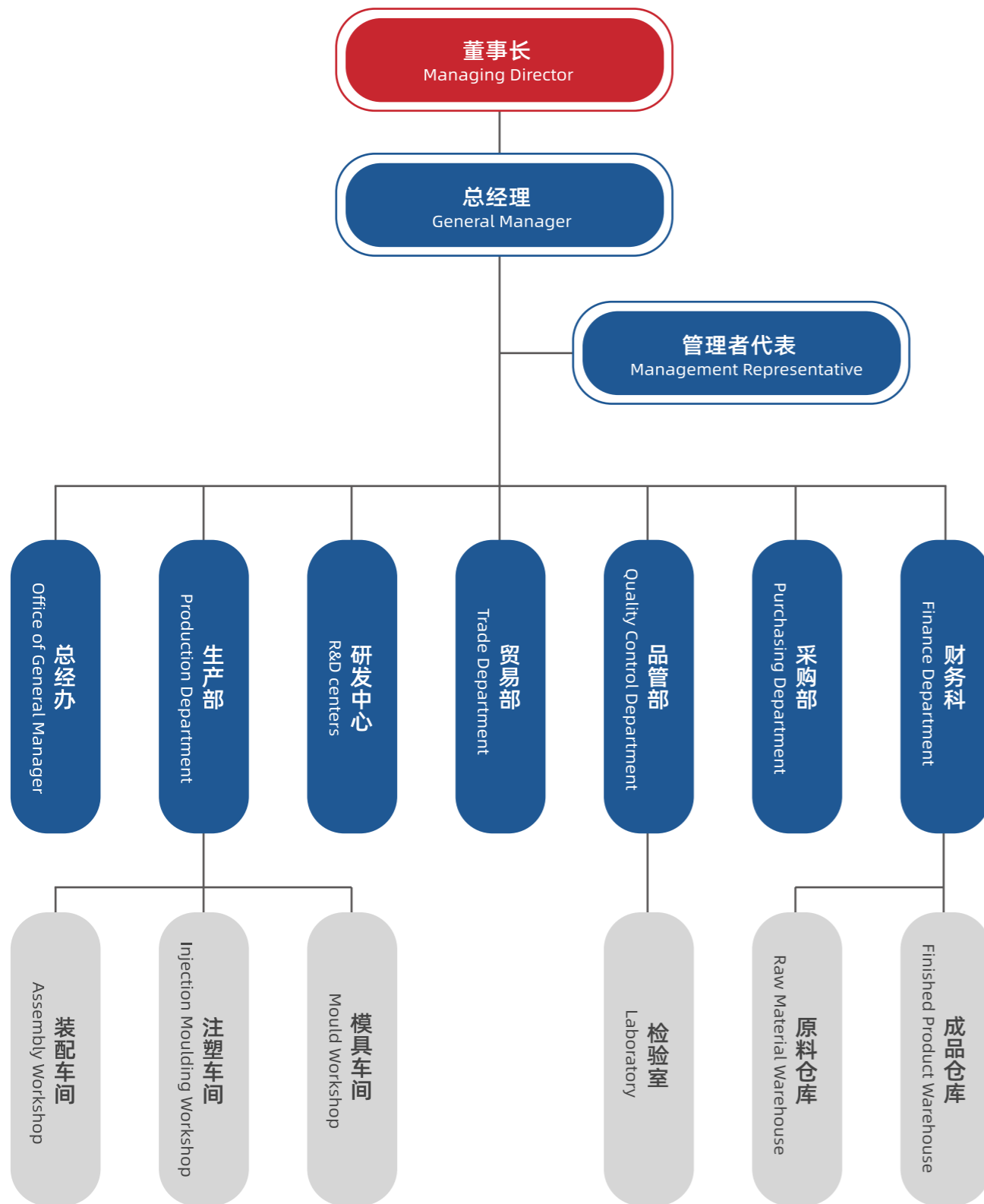


服务宗旨 Service Aim

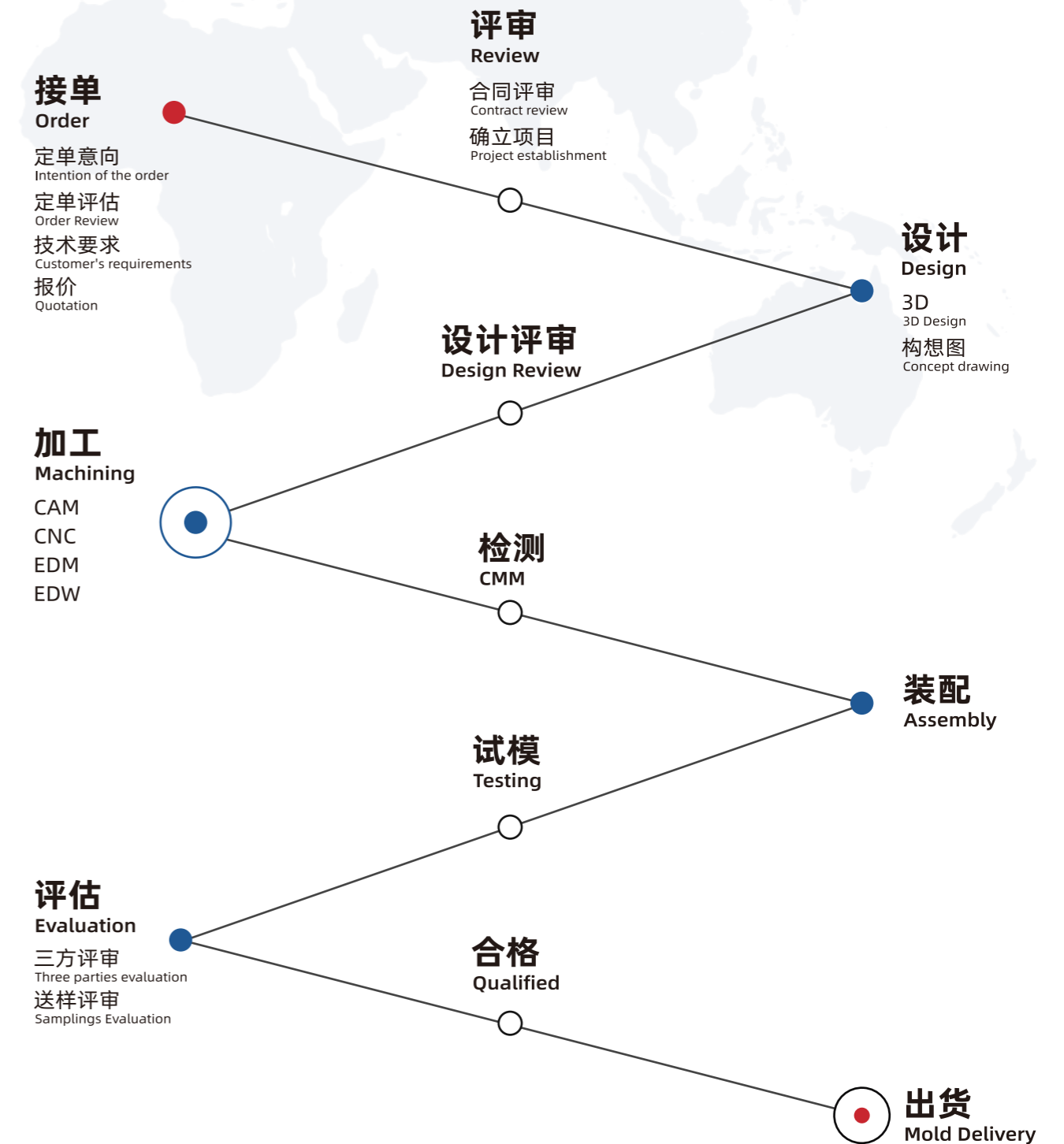
通过先进的技术、科学的设计、缜密的制造及人性化的服务,达到并超越客户期望
Meeting and Exceeding Customer Expectations through Advanced Technology, Scientific

OUR CORE COMPETITIVENESS

Enterprise Organization Structure 组织架构



Project rollup of mold's development 模具开发项目流程图



合作伙伴

Cooperative partner



美的集团



海尔集团

SUPOR 苏泊尔

苏泊尔厨卫



海信集团



小天鹅家电



飞利浦健康科技



霍尼韦尔

Joyoung 九阳

九阳集团



新飞电器



伊莱克斯

伊莱克斯电器



拥有先进的现代化车间管理和生产设备，才能生产出高品质的模具
Only owning the advanced modern workshop management and production equipments can produce high quality moulds.

Professional Equipments 专业设备



01

夏米尔慢走丝线切割
Chamier wire cutting

02

高速机
High speed machine

03

镜面火花机
Mirror sparks

04

中走丝
Mirror sparks

05

注塑机
injection molding machine



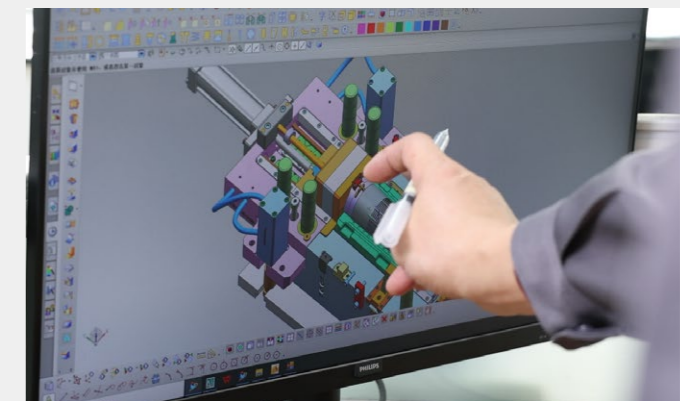
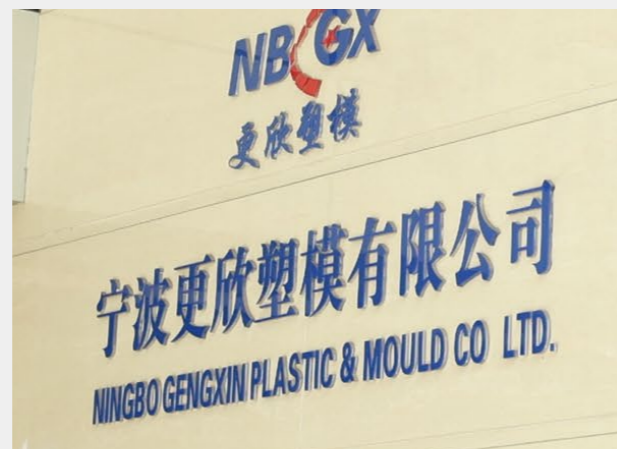
公司具有较强的技术研发能力,历年研发投入相当比例的资金,研发机构、人员及设备的配置门类齐全、结构合理,能适应企业持续发展的需要。

The company has strong technical development ability, inputs quite proportion of fundevery year for research and development, and has a complete range of configuration andrational construction for R&D institution, personnel and equipment, which can adapt to the needs of the continuous development of enterprise.

拥有先进的现代化车间管理和生产设备, 才能生产出高品质的模具

Only owning the advanced modern workshop management and production equipments can produce high quality moulds.

Professional Research and Development Team 专业研发团队





精良的设备、细致认真的工作态度，成就产品的优良品质

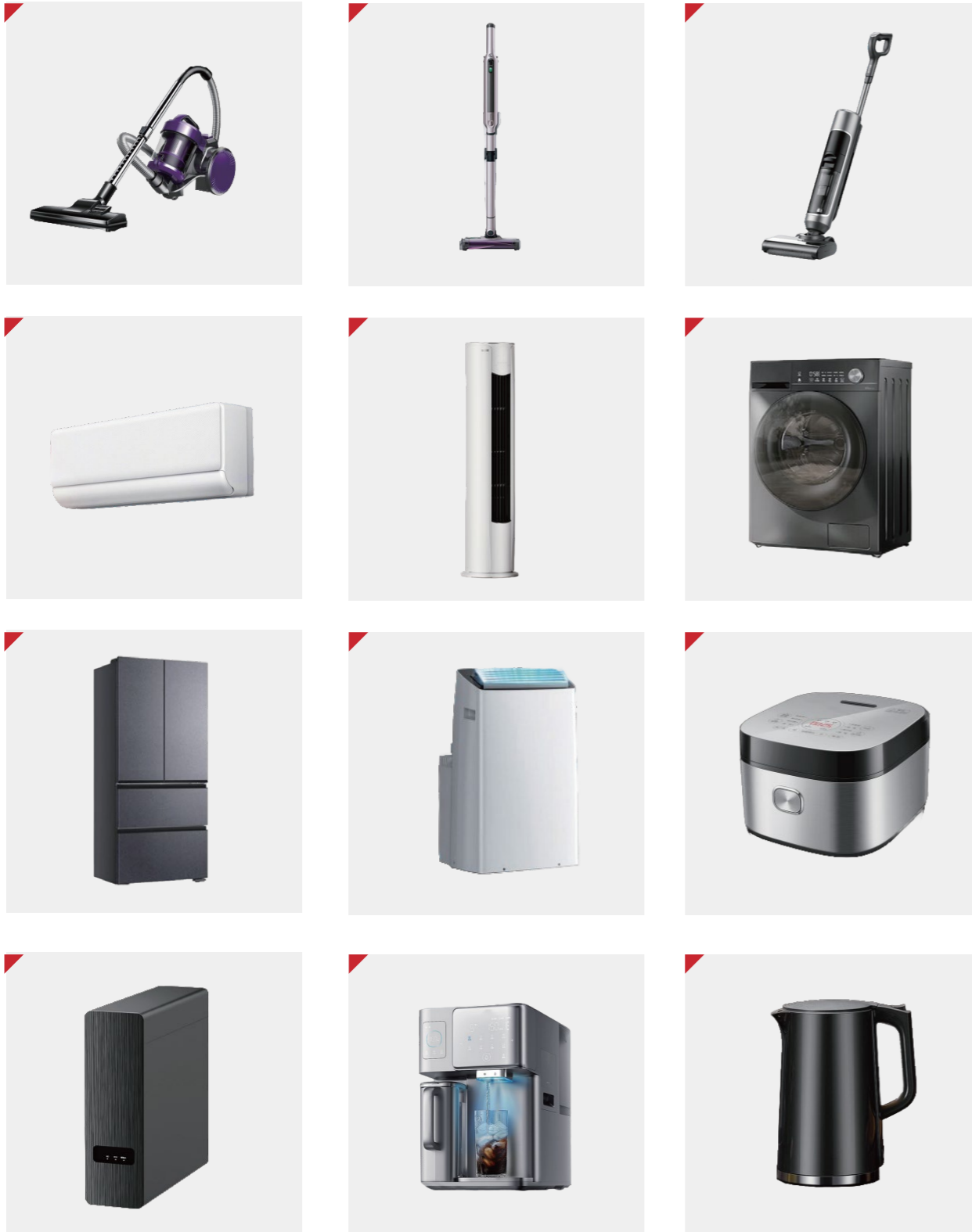
Sophisticated equipments and meticulous and earnest working attitude achieve the product's excellent quality.

Assembly shop
装配车间



家电类产品

Household appliances



汽车类产品

Automobile products

